

Wallace Dr between Willis Point Rd and Municipal boundary

February 25, 2020 To February 27, 2020



The data presented here is for information purposes only and should not be considered authoritative for construction, geotechnical, engineering, navigational, legal, or other site-specific uses. The information shared is owned by the Transportation Division of the Engineering Department at the District of Saanich. Accuracy is not guaranteed.

Start Date: 24-Feb-20
 Start Time: 0:05
 Station ID: C0074-01

Location 1: Wallace Dr between Willis Point Rd and Municipal boundary

Note: Higher than typical afternoon volumes on Feb. 26.

DATE:	February 24, 2020		February 25, 2020		February 26, 2020		February 27, 2020		February 28, 2020		WK AVG		WK AVG	HOURLY
	MON		TUE		WED		THURS		FRI				CH 1+2	%
Time:	NB	SB	NB	SB	NB	SB	NB	SB	NB	SB	NB	SB		
12-1 AM			1	1	4	0	4	1			3	1	4	0.1%
1-2 AM			2	2	1	0	1	0			1	1	2	0.1%
2-3 AM			1	1	4	3	0	0			2	1	3	0.1%
3-4 AM			0	1	0	3	2	4			1	3	3	0.1%
4-5 AM			0	4	2	3	1	4			1	4	5	0.2%
5-6 AM			16	16	10	15	9	9			12	13	25	0.9%
6-7 AM			59	64	58	51	56	63			58	59	117	4.0%
7-8 AM			82	135	71	153	72	140			75	143	218	7.5%
8-9 AM			91	134	91	137	83	127			88	133	221	7.6%
9-10 AM			57	83	72	97	57	92			62	91	153	5.2%
10-11 AM			51	79	72	73	66	100			63	84	147	5.0%
11-12 PM			71	93	90	88	82	85			81	89	170	5.8%
12-1 PM			72	64	78	90	80	104			77	86	163	5.6%
1-2 PM			72	76	93	95	72	90			79	87	166	5.7%
2-3 PM			72	107	127	132	101	101			100	113	213	7.3%
3-4 PM			98	154	254	205	123	130			158	163	321	11.0%
4-5 PM			139	111	267	214	146	143			184	156	340	11.6%
5-6 PM			136	87	196	162	130	94			154	114	268	9.2%
6-7 PM			87	62	73	59	88	64			83	62	144	4.9%
7-8 PM			44	23	47	41	58	30			50	31	81	2.8%
8-9 PM			47	11	36	22	43	24			42	19	61	2.1%
9-10 PM			27	14	27	15	43	14			32	14	47	1.6%
10-11 PM			17	8	29	13	18	13			21	11	33	1.1%
11-12 AM			11	5	11	3	14	2			12	3	15	0.5%
LANES			1253	1335	1713	1674	1349	1434			1438	1481	2919	100.0%
TOTAL			2588		3387		2783				2920			
	MON		TUE		WED		THURS		FRI		WK AVG			

PEAK HOUR					TOTAL VEHICALS-PEAK PERIODS		2 HOUR PEAK INTERVALS						
MAX. 7 - 9 am PEAK HOUR	221	⇒	7.6%	between 8-9 AM	1379	⇒	6 HR TOTAL	2 HR AM (7 - 9 AM)					
MAX. 7 - 11 am PEAK HOUR	221	⇒	7.6%	between 8-9 AM	1047	⇒	4 HR TOTAL	VEH / HR	VEH / 2HR	2 HR %			
MAX. 11 am - 1 pm PEAK HOUR	170	⇒	5.8%	between 11-12 PM					7-8 AM	218	439	15.0%	
MAX. 11 am - 3 pm PEAK HOUR	213	⇒	7.3%	between 2-3 PM					8-9 AM	221			
MAX. 4 - 6 pm PEAK HOUR	340	⇒	11.6%	between 4-5 PM					2 HR NOON (11 - 1 PM)				
MAX. 3 - 6 pm PEAK HOUR	340	⇒	11.6%	between 4-5 PM					VEH / HR	VEH / 2HR	2 HR %		
							24 HOUR FACTORS		11-12 PM	170	332	11.4%	
							2.12 ⇒ 6-24 HR FACT.		12-1 PM	163			
							2.79 ⇒ 4-24 HR FACT.		2 HR PM (4 - 6 PM)				
									VEH / HR	VEH / 2HR	2 HR %		
									4-5 PM	340	608	20.8%	
									5-6 PM	268			

Wallace Dr between Willis Point Rd and Municipal boundary

Northbound

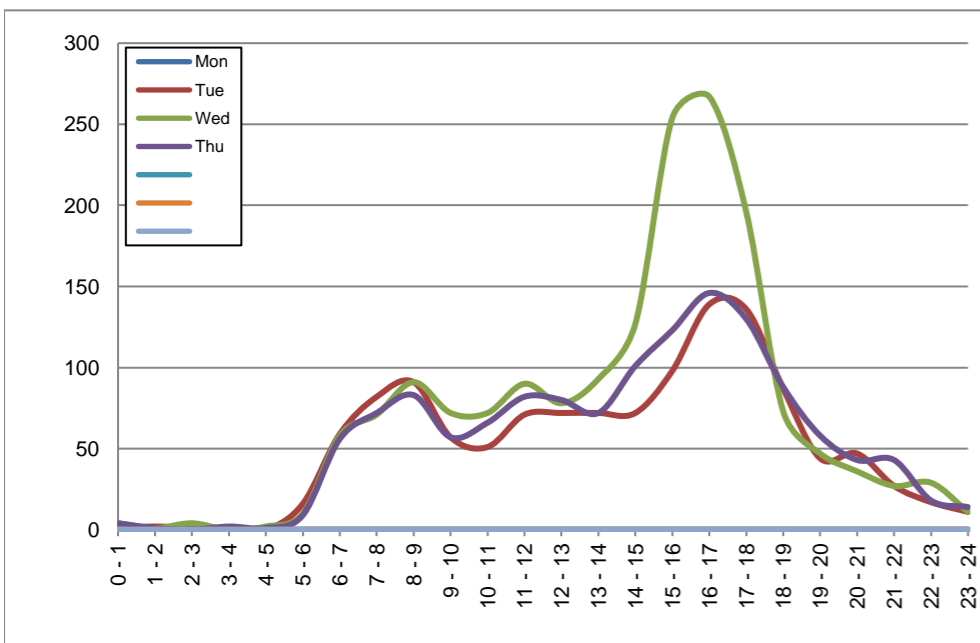
February 24, 2020 to February 27, 2020

Hourly Volumes

Time Period	Mon	Tue	Wed	Thu			
	Feb 24	Feb 25	Feb 26	Feb 27			
0 - 1		1	4	4			
1 - 2		2	1	1			
2 - 3		1	4	0			
3 - 4		0	0	2			
4 - 5		0	2	1			
5 - 6		16	10	9			
6 - 7		59	58	56			
7 - 8		82	71	72			
8 - 9		91	91	83			
9 - 10		57	72	57			
10 - 11		51	72	66			
11 - 12		71	90	82			
12 - 13		72	78	80			
13 - 14		72	93	72			
14 - 15		72	127	101			
15 - 16		98	254	123			
16 - 17		139	267	146			
17 - 18		136	196	130			
18 - 19		87	73	88			
19 - 20		44	47	58			
20 - 21		47	36	43			
21 - 22		27	27	43			
22 - 23		17	29	18			
23 - 24		11	11	14			
Day Total		1253	1713	1349			

15-Minute Volumes

Time Start	Mon	Tue	Wed	Thu				Time Start	Mon	Tue	Wed	Thu			
	Feb 24	Feb 25	Feb 26	Feb 27					Feb 24	Feb 25	Feb 26	Feb 27			
0:00		1	2	3				12:00		20	22	21			
0:15		0	0	0				12:15		21	24	23			
0:30		0	1	1				12:30		18	13	16			
0:45		0	1	0				12:45		13	19	20			
1:00		0	0	1				13:00		26	22	17			
1:15		1	1	0				13:15		22	23	19			
1:30		0	0	0				13:30		9	19	15			
1:45		1	0	0				13:45		15	29	21			
2:00		0	1	0				14:00		21	29	22			
2:15		0	2	0				14:15		15	34	24			
2:30		0	0	0				14:30		17	25	23			
2:45		1	1	0				14:45		19	39	32			
3:00		0	0	0				15:00		22	48	33			
3:15		0	0	1				15:15		21	64	18			
3:30		0	0	0				15:30		34	63	36			
3:45		0	0	1				15:45		21	79	36			
4:00		0	0	0				16:00		29	88	33			
4:15		0	0	0				16:15		40	52	30			
4:30		0	0	1				16:30		26	68	37			
4:45		0	2	0				16:45		44	59	46			
5:00		0	0	0				17:00		40	60	23			
5:15		3	2	2				17:15		34	58	35			
5:30		3	2	3				17:30		34	41	37			
5:45		10	6	4				17:45		28	37	35			
6:00		4	5	6				18:00		18	20	25			
6:15		7	7	8				18:15		28	19	28			
6:30		26	24	21				18:30		18	22	19			
6:45		22	22	21				18:45		23	12	16			
7:00		12	12	11				19:00		17	13	12			
7:15		23	21	18				19:15		11	13	17			
7:30		19	15	16				19:30		6	11	17			
7:45		28	23	27				19:45		10	10	12			
8:00		30	28	21				20:00		13	7	16			
8:15		27	37	32				20:15		10	8	10			
8:30		17	19	14				20:30		17	10	8			
8:45		17	7	16				20:45		7	11	9			
9:00		20	11	16				21:00		7	9	8			
9:15		11	20	18				21:15		8	10	8			
9:30		13	28	8				21:30		8	7	15			
9:45		13	13	15				21:45		4	1	12			
10:00		12	18	16				22:00		4	9	4			
10:15		11	17	21				22:15		7	11	4			
10:30		17	18	16				22:30		5	7	7			
10:45		11	19	13				22:45		1	2	3			
11:00		12	26	14				23:00		4	3	4			
11:15		27	22	24				23:15		3	1	2			
11:30		14	26	16				23:30		2	4	3			
11:45		18	16	28				23:45		2	3	5			



Site notes:

Wallace Dr between Willis Point Rd and Municipal boundary

Southbound

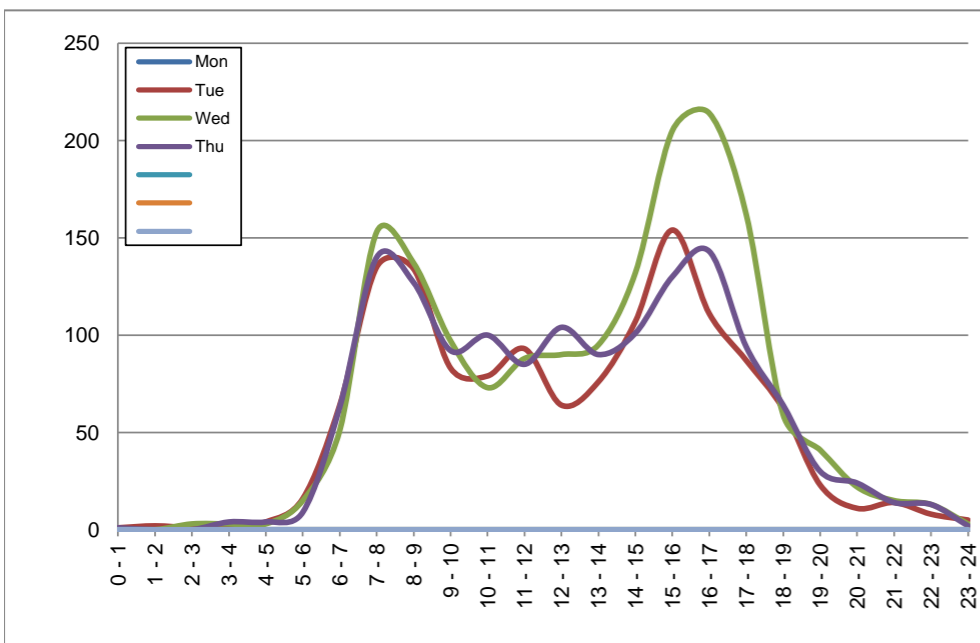
February 24, 2020 to February 27, 2020

Hourly Volumes

Time Period	Mon	Tue	Wed	Thu			
	Feb 24	Feb 25	Feb 26	Feb 27			
0 - 1		1	0	1			
1 - 2		2	0	0			
2 - 3		1	3	0			
3 - 4		1	3	4			
4 - 5		4	3	4			
5 - 6		16	15	9			
6 - 7		64	51	63			
7 - 8		135	153	140			
8 - 9		134	137	127			
9 - 10		83	97	92			
10 - 11		79	73	100			
11 - 12		93	88	85			
12 - 13		64	90	104			
13 - 14		76	95	90			
14 - 15		107	132	101			
15 - 16		154	205	130			
16 - 17		111	214	143			
17 - 18		87	162	94			
18 - 19		62	59	64			
19 - 20		23	41	30			
20 - 21		11	22	24			
21 - 22		14	15	14			
22 - 23		8	13	13			
23 - 24		5	3	2			
Day Total		1335	1674	1434			

15-Minute Volumes

Time Start	Mon	Tue	Wed	Thu			
	Feb 24	Feb 25	Feb 26	Feb 27			
0:00		0	0	1			
0:15		1	0	0			
0:30		0	0	0			
0:45		0	0	0			
1:00		0	0	0			
1:15		0	0	0			
1:30		0	0	0			
1:45		2	0	0			
2:00		0	0	0			
2:15		0	1	0			
2:30		1	2	0			
2:45		0	0	0			
3:00		0	0	0			
3:15		1	2	2			
3:30		0	0	1			
3:45		0	1	1			
4:00		0	2	0			
4:15		1	0	1			
4:30		1	1	2			
4:45		2	0	1			
5:00		1	2	3			
5:15		3	2	0			
5:30		4	4	3			
5:45		8	7	3			
6:00		13	8	10			
6:15		9	7	14			
6:30		20	13	16			
6:45		22	23	23			
7:00		26	35	24			
7:15		31	28	30			
7:30		40	50	42			
7:45		38	40	44			
8:00		31	29	35			
8:15		33	33	29			
8:30		42	49	39			
8:45		28	26	24			
9:00		20	28	25			
9:15		23	24	23			
9:30		17	24	23			
9:45		23	21	21			
10:00		23	19	21			
10:15		14	21	30			
10:30		20	18	21			
10:45		22	15	28			
11:00		32	26	22			
11:15		26	21	13			
11:30		14	21	25			
11:45		21	20	25			
12:00			13	20	26		
12:15			17	20	30		
12:30			15	30	28		
12:45			19	20	20		
13:00			18	16	18		
13:15			21	21	19		
13:30			21	28	20		
13:45			16	30	33		
14:00			26	30	26		
14:15			26	24	20		
14:30			36	30	20		
14:45			19	48	35		
15:00			27	50	25		
15:15			25	37	23		
15:30			62	69	52		
15:45			40	49	30		
16:00			34	57	38		
16:15			19	52	23		
16:30			36	54	41		
16:45			22	51	41		
17:00			32	51	28		
17:15			23	50	20		
17:30			14	35	28		
17:45			18	26	18		
18:00			15	21	19		
18:15			22	12	19		
18:30			13	17	14		
18:45			12	9	12		
19:00			7	13	7		
19:15			8	7	11		
19:30			2	10	5		
19:45			6	11	7		
20:00			3	4	7		
20:15			1	9	5		
20:30			5	7	7		
20:45			2	2	5		
21:00			5	3	6		
21:15			2	3	1		
21:30			2	8	3		
21:45			5	1	4		
22:00			0	6	5		
22:15			6	4	2		
22:30			1	3	5		
22:45			1	0	1		
23:00			1	1	0		
23:15			3	2	1		
23:30			1	0	1		
23:45			0	0	0		



Site notes:

Vehicle Speed Summary

Saanich Engineering Department

Count Id: C0074-01

Filename: Wallace Dr between Willis Point Rd and Municipal boundary-Feb-2020.xlsm

Location: Wallace Dr between Willis Point Rd and Municipal boundary

Note: Higher than typical afternoon volumes on Feb. 26.

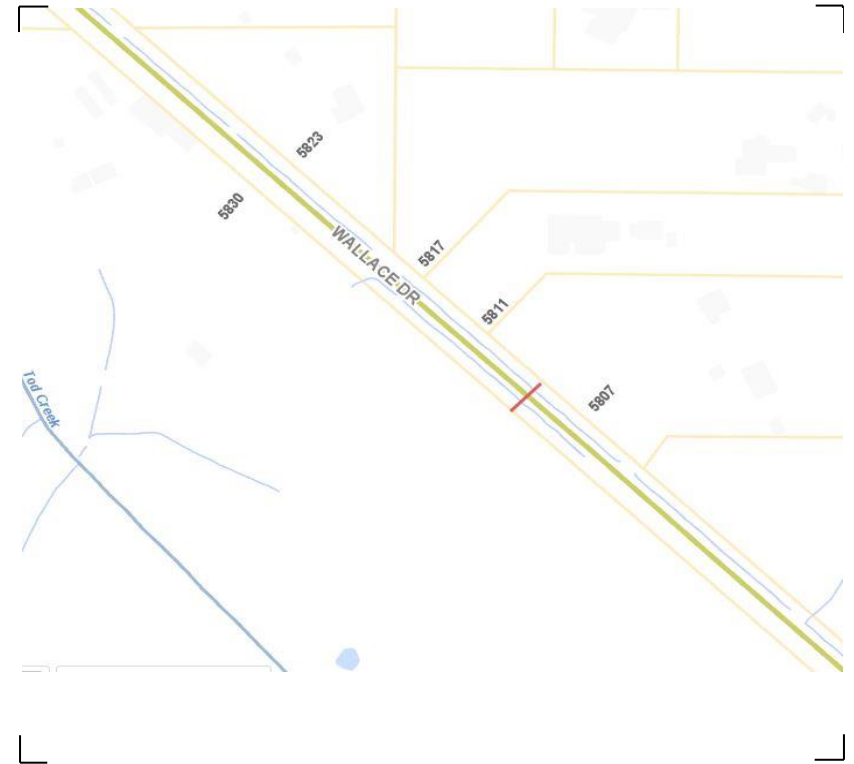
Direction: **North-South**

Dates: **February 25, 2020 To February 27, 2020**

Filtered data

AVG. SPEED	37 mph	60 km/h
50 % SPEED	38 mph	61 km/h
85 % SPEED	42 mph	68 km/h
95 % SPEED	46 mph	74 km/h

Location Map



Wallace Dr between Willis Point Rd and Municipal boundary

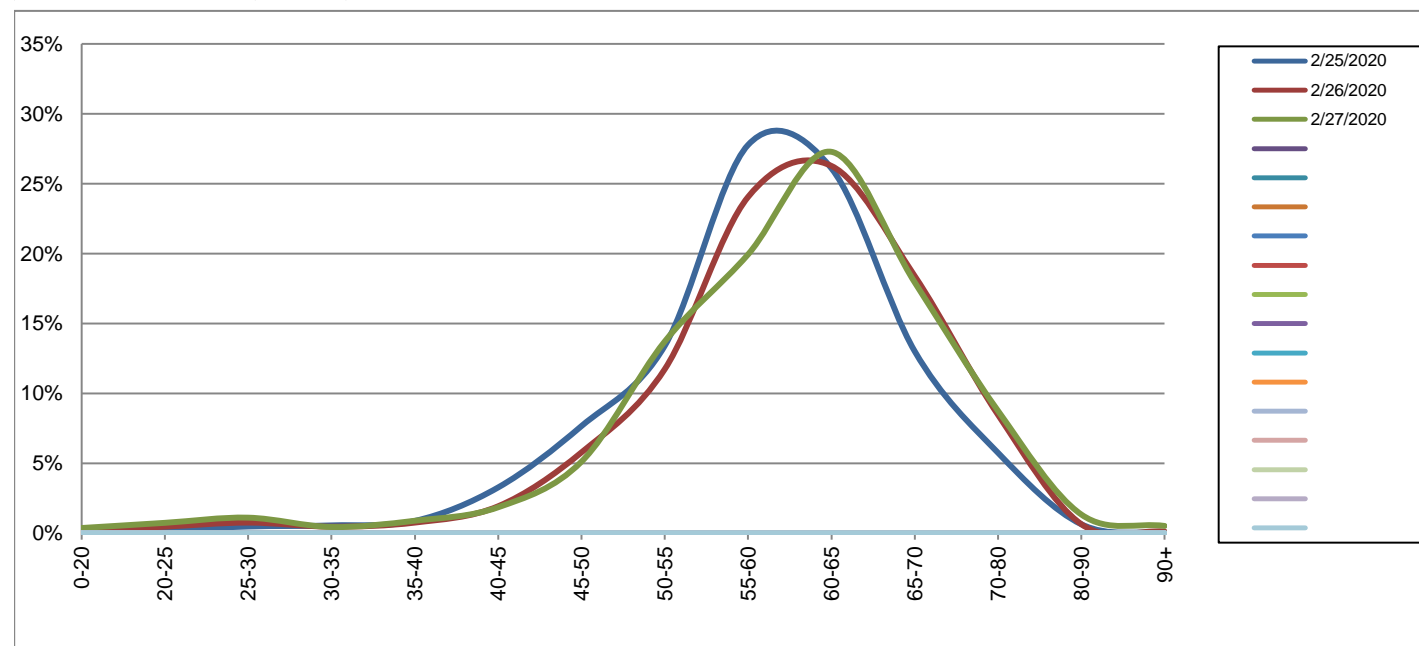
Northbound

February 25, 2020 to February 27, 2020

Daily Speed Bin Percentages														Daily Speed Bin Volumes														Total	Avg.	
Bin #	1	2	3	4	5	6	7	8	9	10	11	12	13	14	1	2	3	4	5	6	7	8	9	10	11	12	13	14	Volume	Speed
Bin Speeds	0-20	20-25	25-30	30-35	35-40	40-45	45-50	50-55	55-60	60-65	65-70	70-80	80-90	90+	0-20	20-25	25-30	30-35	35-40	40-45	45-50	50-55	55-60	60-65	65-70	70-80	80-90	90+		
2/25/2020	0.2%	0.2%	0.5%	0.6%	0.9%	3.3%	7.7%	13.4%	27.8%	26.1%	13.0%	5.7%	0.6%	0.0%	3	3	6	7	11	41	96	168	348	327	163	72	8	0	1253	59
2/26/2020	0.2%	0.5%	0.8%	0.5%	0.8%	1.9%	5.8%	11.7%	24.1%	26.3%	18.4%	8.5%	0.6%	0.1%	3	8	13	8	13	33	99	201	412	450	315	145	11	2	1713	60
2/27/2020	0.4%	0.7%	1.1%	0.4%	0.9%	1.9%	5.1%	13.7%	19.9%	27.3%	17.9%	8.7%	1.3%	0.5%	5	10	15	6	12	25	69	185	269	368	242	118	18	7	1349	60
Total	0.3%	0.5%	0.8%	0.5%	0.8%	2.3%	6.1%	12.8%	23.8%	26.5%	16.7%	7.8%	0.9%	0.2%	11	21	34	21	36	99	264	554	1029	1145	720	335	37	9	4315	60

Speed Data Summary

Bin #	1	2	3	4	5	6	7	8	9	10	11	12	13	14	Total
Bin Speeds	0-20	20-25	25-30	30-35	35-40	40-45	45-50	50-55	55-60	60-65	65-70	70-80	80-90	90+	
Survey Total	11	21	34	21	36	99	264	554	1029	1145	720	335	37	9	4315
% Total	0.3%	0.5%	0.8%	0.5%	0.8%	2.3%	6.1%	12.8%	23.8%	26.5%	16.7%	7.8%	0.9%	0.2%	100%
Accumulated %	0.3%	0.7%	1.5%	2.0%	2.9%	5.1%	11.3%	24.1%	47.9%	74.5%	91.2%	98.9%	99.8%	100%	
Inverse Accum. %	99.7%	99.3%	98.5%	98.0%	97.1%	94.9%	88.7%	75.9%	52.1%	25.5%	8.8%	1.1%	0.2%	0.0%	
Average Speed	60 KM/H														



Site notes:

Wallace Dr between Willis Point Rd and Municipal boundary

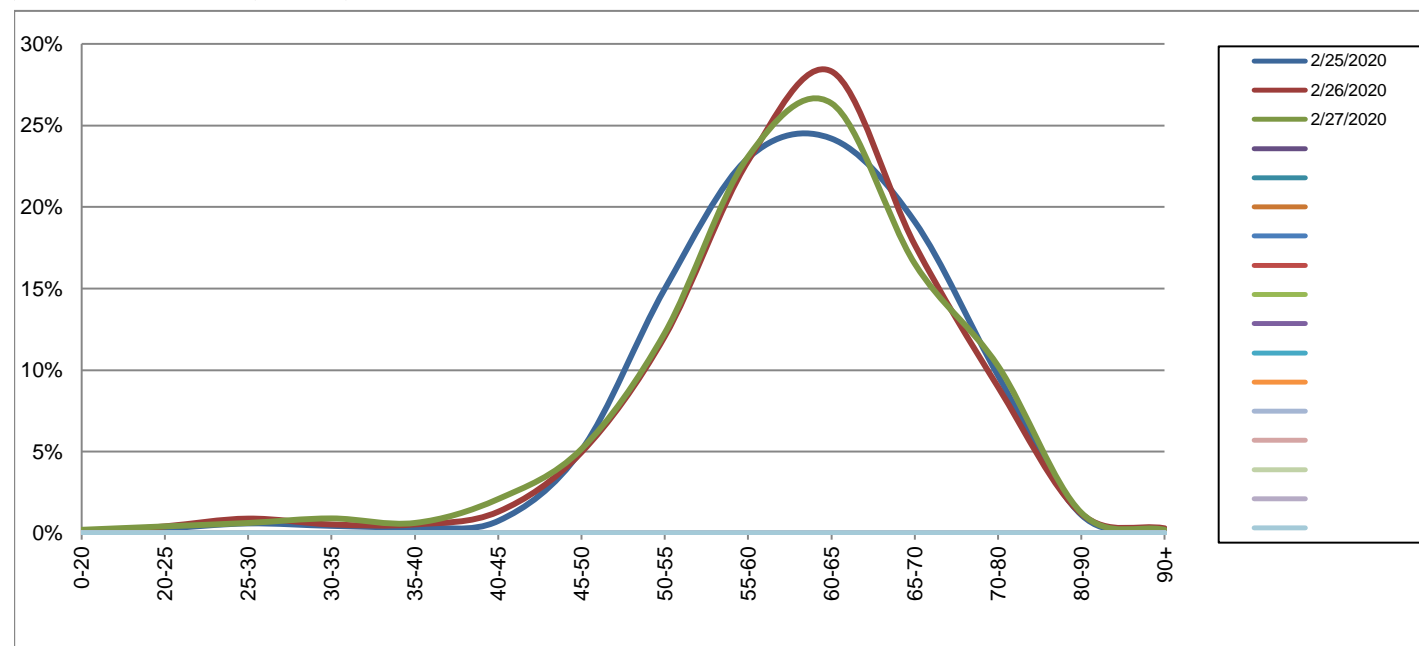
Southbound

February 25, 2020 to February 27, 2020

Daily Speed Bin Percentages															Daily Speed Bin Volumes														Total	Avg.
Bin #	1	2	3	4	5	6	7	8	9	10	11	12	13	14	1	2	3	4	5	6	7	8	9	10	11	12	13	14	Volume	Speed
Bin Speeds	0-20	20-25	25-30	30-35	35-40	40-45	45-50	50-55	55-60	60-65	65-70	70-80	80-90	90+	0-20	20-25	25-30	30-35	35-40	40-45	45-50	50-55	55-60	60-65	65-70	70-80	80-90	90+		
2/25/2020	0.1%	0.3%	0.6%	0.4%	0.4%	0.7%	5.1%	15.0%	23.0%	24.2%	19.1%	9.7%	1.1%	0.2%	2	4	8	6	5	10	68	200	307	323	255	129	15	3	1335	61
2/26/2020	0.0%	0.4%	0.9%	0.5%	0.5%	1.3%	5.0%	12.1%	22.8%	28.3%	17.7%	9.0%	1.2%	0.3%	0	7	15	9	9	22	83	202	382	474	296	150	20	5	1674	61
2/27/2020	0.2%	0.4%	0.6%	0.9%	0.6%	2.1%	5.2%	12.3%	23.1%	26.4%	16.5%	10.3%	1.3%	0.2%	3	6	9	13	9	30	74	176	331	378	237	147	18	3	1434	60
Total	0.1%	0.4%	0.7%	0.6%	0.5%	1.4%	5.1%	13.0%	23.0%	26.4%	17.7%	9.6%	1.2%	0.2%	5	17	32	28	23	62	225	578	1020	1175	788	426	53	11	4443	61

Speed Data Summary

Bin #	1	2	3	4	5	6	7	8	9	10	11	12	13	14	Total
Bin Speeds	0-20	20-25	25-30	30-35	35-40	40-45	45-50	50-55	55-60	60-65	65-70	70-80	80-90	90+	
Survey Total	5	17	32	28	23	62	225	578	1020	1175	788	426	53	11	4443
% Total	0.1%	0.4%	0.7%	0.6%	0.5%	1.4%	5.1%	13.0%	23.0%	26.4%	17.7%	9.6%	1.2%	0.2%	100%
Accumulated %	0.1%	0.5%	1.2%	1.8%	2.4%	3.8%	8.8%	21.8%	44.8%	71.2%	89.0%	98.6%	99.8%	100%	
Inverse Accum. %	99.9%	99.5%	98.8%	98.2%	97.6%	96.2%	91.2%	78.2%	55.2%	28.8%	11.0%	1.4%	0.2%	0.0%	
Average Speed	61 KM/H														



Site notes:

Wallace Dr between Willis Point Rd and Municipal boundary

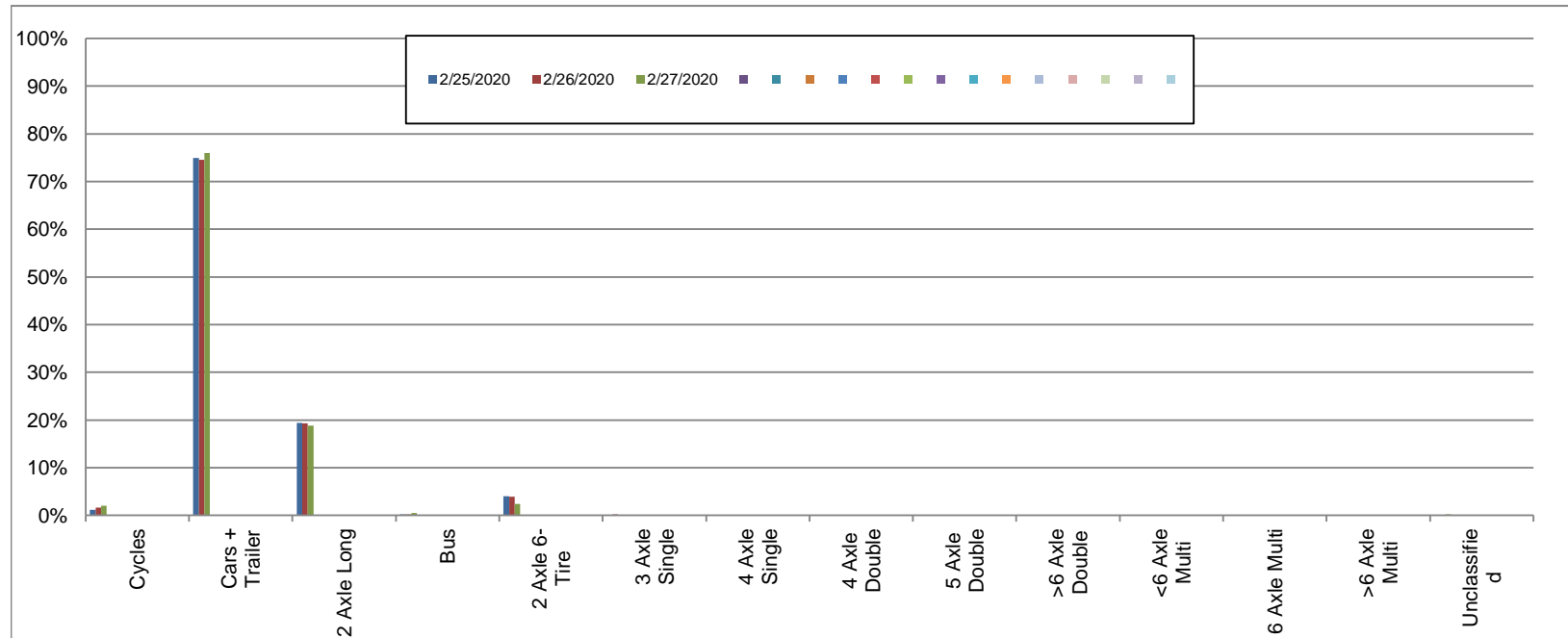
Northbound

February 25, 2020 to February 27, 2020

Daily Class Bin Percentages															Daily Class Bin Volumes											Total Volume			
Bin #	1	2	3	4	5	6	7	8	9	10	11	12	13	14	1	2	3	4	5	6	7	8	9	10	11		12	13	14
Bin Class	Cycles	Cars + Trailer	2 Axle Long	Bus	2 Axle 6-Tire	3 Axle Single	4 Axle Single	4 Axle Double	5 Axle Double	>6 Axle Double	<6 Axle Multi	6 Axle Multi	>6 Axle Multi	Unclassified	Cycles	Cars + Trailer	2 Axle Long	Bus	2 Axle 6-Tire	3 Axle Single	4 Axle Single	4 Axle Double	5 Axle Double	>6 Axle Double	<6 Axle Multi	6 Axle Multi	>6 Axle Multi	Unclassified	
2/25/2020	1.1%	74.9%	19.4%	0.2%	4.0%	0.1%	0.1%	0.1%	0.0%	0.1%	0.0%	0.0%	0.0%	0.0%	14	939	243	3	50	1	1	1	0	1	0	0	0	0	1253
2/26/2020	1.6%	74.6%	19.3%	0.2%	3.9%	0.2%	0.0%	0.1%	0.0%	0.0%	0.0%	0.0%	0.0%	0.1%	28	1278	330	4	67	3	0	1	0	0	0	0	0	2	1713
2/27/2020	2.0%	76.0%	18.8%	0.4%	2.4%	0.0%	0.0%	0.1%	0.0%	0.0%	0.0%	0.0%	0.0%	0.2%	27	1025	254	6	32	0	0	2	0	0	0	0	0	3	1349
Total	1.6%	75.1%	19.2%	0.3%	3.5%	0.1%	0.0%	0.1%	0.0%	0.0%	0.0%	0.0%	0.0%	0.1%	69	3242	827	13	149	4	1	4	0	1	0	0	0	5	4315

Class Data Summary

Bin #	1	2	3	4	5	6	7	8	9	10	11	12	13	14	Total Volume
Bin Class	Cycles	Cars + Trailer	2 Axle Long	Bus	2 Axle 6-Tire	3 Axle Single	4 Axle Single	4 Axle Double	5 Axle Double	>6 Axle Double	<6 Axle Multi	6 Axle Multi	>6 Axle Multi	Unclassified	Total Volume
Survey Total	69	3242	827	13	149	4	1	4	0	1	0	0	0	5	4315
% Total	1.6%	75.1%	19.2%	0.3%	3.5%	0.1%	0.0%	0.1%	0.0%	0.0%	0.0%	0.0%	0.0%	0.1%	100%
Accumulated %	1.6%	76.7%	95.9%	96.2%	99.7%	99.7%	99.8%	99.9%	99.9%	99.9%	99.9%	99.9%	99.9%	100.0%	
Inv. Accum. %	98.4%	23.3%	4.1%	3.8%	0.3%	0.3%	0.2%	0.1%	0.1%	0.1%	0.1%	0.1%	0.1%	0.0%	



Classification Descriptions

Bin #	Bin Description
1	Motorcycles
2	Passenger cars, including those with recreational trailers
3	2-axle pick-ups, vans, and RVs, including those with recreational trailers
4	Buses
5	2-axle, 6-tire single units
6	3-axle single units
7	4-axle single units
8	3-axle or 4-axle double unit
9	5-axle double unit
10	6-, 7-, or 8-axle double unit
11	5-axle multiple unit
12	6-axle multiple unit
13	7-or-more-axle multiple unit
14	Vehicles that could not be classified

Site notes:

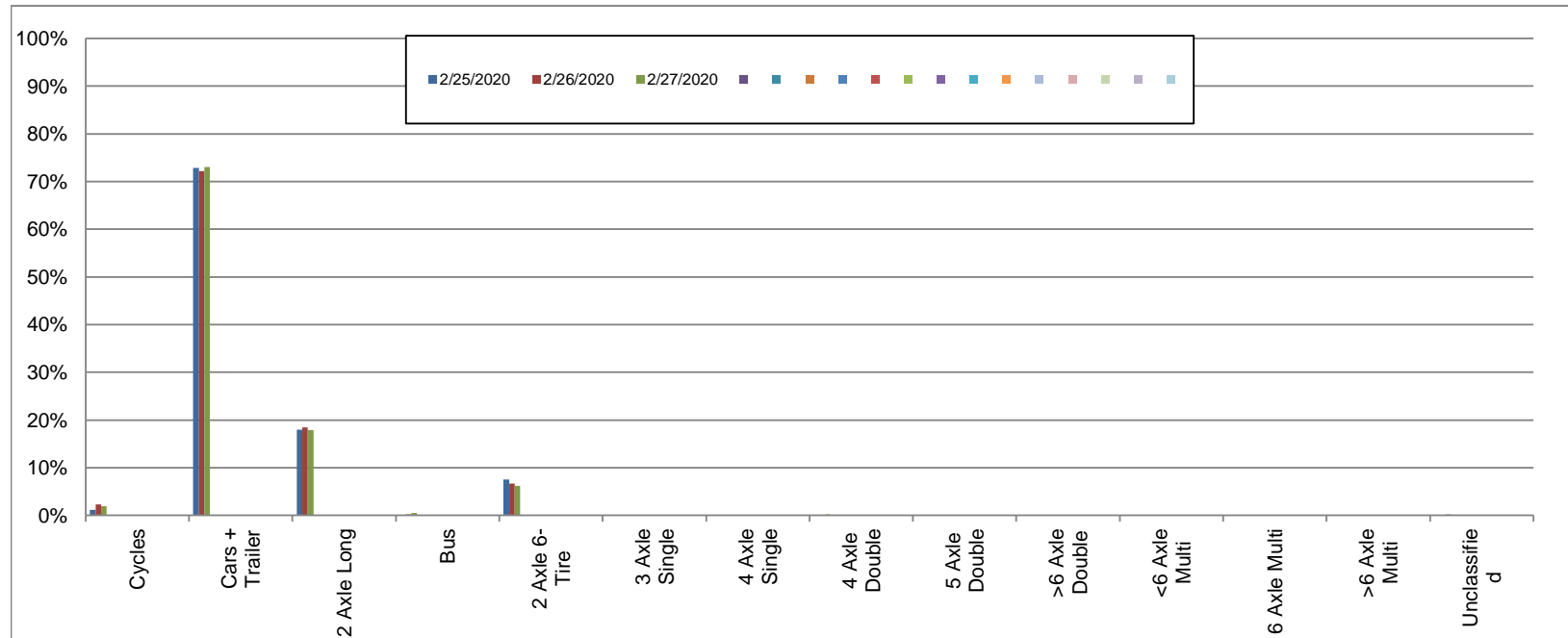
Wallace Dr between Willis Point Rd and Municipal boundary

Southbound
February 25, 2020 to February 27, 2020

Daily Class Bin Percentages															Daily Class Bin Volumes															
Bin #	1	2	3	4	5	6	7	8	9	10	11	12	13	14	1	2	3	4	5	6	7	8	9	10	11	12	13	14	Total Volume	
Bin Class	Cycles	Cars + Trailer	2 Axle Long	Bus	2 Axle 6-Tire	3 Axle Single	4 Axle Single	4 Axle Double	5 Axle Double	>6 Axle Double	<6 Axle Multi	6 Axle Multi	>6 Axle Multi	Unclassified	Cycles	Cars + Trailer	2 Axle Long	Bus	2 Axle 6-Tire	3 Axle Single	4 Axle Single	4 Axle Double	5 Axle Double	>6 Axle Double	<6 Axle Multi	6 Axle Multi	>6 Axle Multi	Unclassified		
2/25/2020	1.2%	72.9%	18.0%	0.1%	7.5%	0.1%	0.0%	0.1%	0.0%	0.1%	0.0%	0.0%	0.0%	0.1%	16	973	240	2	100	1	0	1	0	1	0	0	0	0	1	1335
2/26/2020	2.3%	72.2%	18.5%	0.2%	6.6%	0.1%	0.0%	0.0%	0.0%	0.0%	0.0%	0.0%	0.0%	0.1%	38	1209	309	4	111	2	0	0	0	0	0	0	0	0	1	1674
2/27/2020	2.0%	73.0%	17.9%	0.5%	6.2%	0.1%	0.0%	0.2%	0.0%	0.0%	0.0%	0.0%	0.0%	0.2%	28	1047	256	7	89	1	0	3	0	0	0	0	0	0	3	1434
Total	1.8%	72.7%	18.1%	0.3%	6.8%	0.1%	0.0%	0.1%	0.0%	0.0%	0.0%	0.0%	0.0%	0.1%	82	3229	805	13	300	4	0	4	0	1	0	0	0	5	4443	

Class Data Summary

Bin #	1	2	3	4	5	6	7	8	9	10	11	12	13	14	Total Volume
Bin Class	Cycles	Cars + Trailer	2 Axle Long	Bus	2 Axle 6-Tire	3 Axle Single	4 Axle Single	4 Axle Double	5 Axle Double	>6 Axle Double	<6 Axle Multi	6 Axle Multi	>6 Axle Multi	Unclassified	Total Volume
Survey Total	82	3229	805	13	300	4	0	4	0	1	0	0	0	5	4443
% Total	1.8%	72.7%	18.1%	0.3%	6.8%	0.1%	0.0%	0.1%	0.0%	0.0%	0.0%	0.0%	0.0%	0.1%	100%
Accumulated %	1.8%	74.5%	92.6%	92.9%	99.7%	99.8%	99.8%	99.9%	99.9%	99.9%	99.9%	99.9%	99.9%	100.0%	
Inv. Accum. %	98.2%	25.5%	7.4%	7.1%	0.3%	0.2%	0.2%	0.1%	0.1%	0.1%	0.1%	0.1%	0.1%	0.0%	



Classification Descriptions

Bin #	Bin Description
1	Motorcycles
2	Passenger cars, including those with recreational trailers
3	2-axle pick-ups, vans, and RVs, including those with recreational trailers
4	Buses
5	2-axle, 6-tire single units
6	3-axle single units
7	4-axle single units
8	3-axle or 4-axle double unit
9	5-axle double unit
10	6-, 7-, or 8-axle double unit
11	5-axle multiple unit
12	6-axle multiple unit
13	7-or-more-axle multiple unit
14	Vehicles that could not be classified

Site notes: